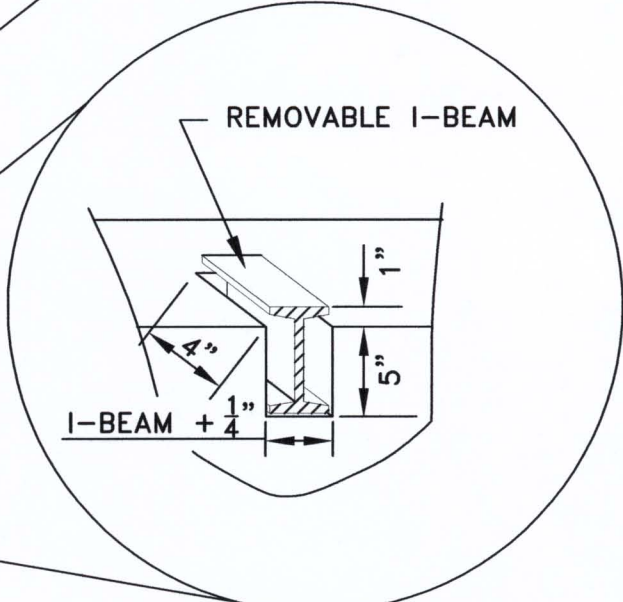
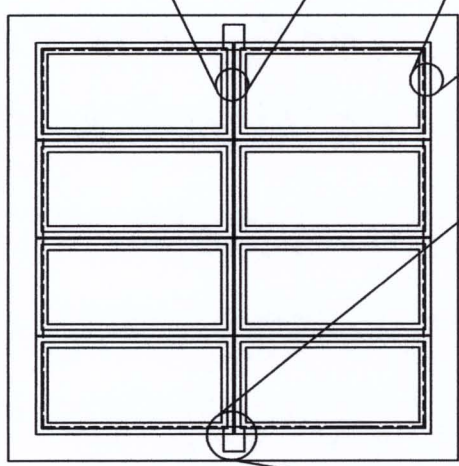


I-BEAM SUPPORT FOR FRAME & COVER

FRAME & COVER TO MATCH FINISHED GRADE



KEY WAY DETAIL FOR REMOVABLE I-BEAM

NOTE ON I-BEAM

8 TO 10 FRAME & COVERS=6" I-BEAM(12.5 LBS. PER FT.)
 12 FRAME & COVERS=8" I-BEAM(31 LBS. PER FT.)

METRO WATER SERVICES

**I-BEAM SUPPORT
FOR CASTINGS
ON LARGE VAULTS**

Hal Balthrop
 LICENSED DISTRIBUTION OPERATOR

NOT TO SCALE | DATE: 02/22/08

DWG. NO. WDET002G



S. J. Little
 DIRECTOR OF WATER AND SEWERAGE SERVICES